

Priority Area: Building Links between Arts and Community Engagement

"Arts and cultural organizations, along with artists and cultural workers, are essential components of New Mexico's public life, cultural identity, and economy. While we all enjoy art that is created purely for the sake of art, there is also great power in work that functions as a catalyst for connection and positive change."

Key Leverage Points

Collaboration and partnership

Establish partnerships among arts and cultural partners, including cross-sector partnerships.

Prioritizes initiatives and projects that are built on collaboration among arts organizations and communities.



Education

Offer relevant, transformative, and quality arts education opportunities for educators, K-12 students and elders.

In- and out-of-school programs that encourage long-term participation in the arts, ensure financial accessibility, and intentionally support cultural and economic diversity among participants, teachers and staff.

Programs that coordinate closely with other groups and organizations.



Build and diversify audiences

Seeks to grow and diversify audiences for the arts in New Mexico.

Younger people and populations not typically served by arts and cultural events are prioritized.



Priority Area: Strategies for Rural Development

“Strategies and approaches that work in the state’s urban areas often fail in other parts of New Mexico, because of the geographic challenges implicit with rural landscapes and also because of cultural divides that exist between urban and rural communities.”

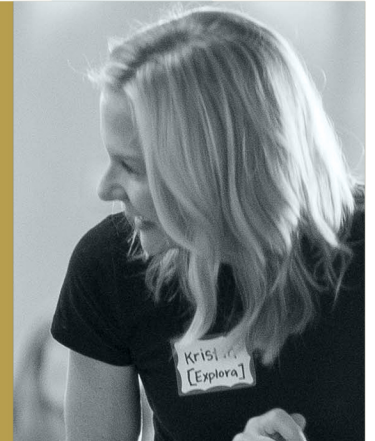
Key Leverage Points

Economic development

New initiatives that seek to revitalize the most sustainable – and most traditional – land-based practices, including agriculture, in creative ways and support creation of food-based businesses in rural areas among vulnerable populations.

Businesses that provide cultural benefit, including those based in the arts.

Innovative applications of technology (e.g. video conferencing or new uses of broadband connectivity) that support development of new businesses or enhance operation of existing enterprises.



Educational advancement

Leverage and support the position of schools and libraries as gathering places and social hubs in rural communities.

Innovative approaches that integrate “learning by doing” and deep student support into curriculum and practice.



Built environment

Community-informed initiatives and programs that seek to upgrade rural built environments in terms of energy efficiency, revitalization and general community cohesiveness and connectivity. *The Foundation cannot support major capital projects.



Priority Area: Capacity Building in the Non-Profit Sector

"A strong base of expertise in these areas that is easily accessible to many high-performing organizations will help drive effectiveness and increase the impact these groups have in the broader sector."

Key Leverage Points

Expertise and professional services

Innovative approaches that increase access to expert professional services and then integrates them within non-profit organizations, particularly multiple organizations.



Shared services and infrastructure

Drive operational-efficiency in the sector by creating opportunities for multiple organizations to share infrastructure or staff.



Leadership development

Programs and approaches that seek to identify people with leadership potential and develop those individuals to be more effective employees and organizational leaders across the sector. Particularly under-represented populations and emerging leaders from vulnerable communities.



Priority Area: Stewardship of Natural Resources

“As a primarily arid state and one in which meaningful portions of revenue are derived from outdoor and adventure tourism, New Mexico relies heavily upon its natural resources to support its economy and quality of life. Key natural resources (including water, air, wildlife, pristine landscapes and well-managed rangeland, among others) should be protected, managed and utilized in ways that support their viability in perpetuity.”

❖ Short-Term Priorities (3 to 5 years)

Save the Gila River. Protect State Environmental Rules. Prohibit Water Speculation. Reduce Coal Pollution Impacts.

❖ Long-Term Concerns

Climate Change. Water. Environmental Education. Ecosystem Restoration.

Key Leverage Points

Engaging Diversity

Reflect and engage local diversity in meaningful ways to expand the conservation movement with a broader base, but also to strengthen it with a diversity of values, perspectives and land-based wisdom.

Successful Alliances and Coalitions

Established alliances should have a track record of success, and clear strategies and goals.

Emerging alliances and coalitions that create a synergy that is greater than the sum of its parts.

Intersection with Other Funding Priorities

New partnerships, engage multiple sectors and use a comprehensive systems approach to addressing natural resource issues concurrently with and through other interconnected issues.



Networking

Engage diversity, create successful alliances and coalitions, and find workable ways to intersect with other sectors and priority areas through relationships with organizations and individuals.

Reduce counterproductive competition, and build partnerships for greater efficiency and effectiveness.



Communications and Ancillary Support

Provide assistance with media, messaging, marketing and general communications that engage the public and educate decision-makers regarding stewardship of natural resources.

Legal or legislative expertise for nonprofits that support organizations with free or subsidized communications, legal and legislative support to a broad range of conservation organizations.

Fostering Innovation

Harness the wealth of innovation and creative thinking in New Mexico and encourage new approaches through risk-taking and innovation.

Priority Area: Leveraging Opportunities with Health Care

“The Foundation acknowledges that the scope of our state’s public health challenges is vast, impacts hundreds of thousands of people and would require far more resources than the Foundation can access to address. Consequently, funding in this area is focused on relatively limited areas.”

Key Leverage Points

Frontline Healthcare Worker workforce development

Develop the Community Health Worker workforce and support the profession as a driver for economic development and job growth.



Innovative approaches to access

Use of technology or other innovative approaches to mitigate barriers of geography, language, cost and cultural barriers and connect communities to effective and relevant health services



Integrated approaches to addressing social determinants

Addresses various social determinants in an integrated manner, either by connecting multiple initiatives or integrating health factors into other, unrelated programs.



Priority Area: Local Food Industry Development

“McCune supports development of market-based alternatives that will ultimately produce better health outcomes and contribute more directly to the economic well being of the citizens and communities of New Mexico.”

Key Leverage Points

Market development

Promise of community based programs focused on building and maintaining relationships between consumers and small farms and other food producers. Emphasis on those that increase profitability and revenue for small farms and producers.



Shared infrastructure

Equipment and facilities as well as administrative and operational functions

Development of new technologies that improve farm profitability.



New farm/farmer development

Emphasizes expansion of the capacity of new farms, both in terms of agricultural practice and competence with standard business practices.

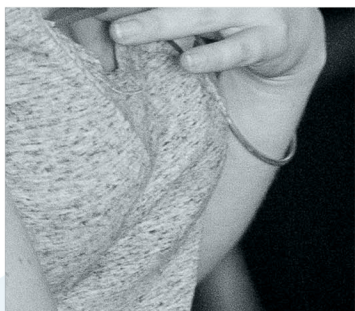
While acknowledging traditional practices, new models of capital development to support emerging agricultural businesses will also be prioritized.



Nutritional health education/interventions

Engage and influence broader audiences in conversations about nutritional health as opportunities are presented by the growth of a more localized food industry.

Creation of mechanisms that connect vulnerable populations with healthy and fresh local produce, dairy products, meat and other food products.



Policy and advocacy

Development of new, innovative policy approaches that could drive greater demand for products created by local farmers and producers.

Advocacy efforts that support heirloom and indigenous crop and seed varieties to maintain genetic diversity of our food system in the face of changing climate characteristics.



Priority Area: Influencing Urban Planning & Built Environments

"The Foundation continues to view the well-conceived development of built environments as critical, supporting strategies that encourage energy efficiency, build civic engagement and support economic development."

Key Leverage Points

Injecting community voices into urban development

Encourage the concept that community voice is of great relevance in decision-making processes, driving higher levels of civic engagement and participation among all New Mexican families.



Driving resource efficiency in built environments.

Seek to drive efficient use of resources - especially water - and innovative approach to planning, design and construction as "best practices" in both rural and urban contexts.



Innovative strategies for affordable housing

Initiate and drive housing projects, especially those that integrate services or other programmatic elements that will help vulnerable families succeed or that include mixed-income approaches.

*does not include construction costs



Priority Area: Education Transformation & Early Childhood Development

“Studies show a 7 to 1 return to the economy for every dollar spent on early childhood development, making this a clear economic development issue as well.”

Key Leverage Points

Early Childhood Development

Drive the development of innovative early childhood and home visiting programming, as well as incubation of programs that appear promising.

Collaborative approaches to this work are especially compelling.

Efforts to educate the public lawmakers about the benefits of funding early childhood development.



School leadership development

More innovative school models
Programs and organizations that provide opportunities for professional development and creative career advancement for teachers and administrators.

Locally designed approaches

Programming and organizations that recognize that education must be responsive to the communities it serves.



Multilingual educational opportunities

New Mexico's multilingual capabilities, including the broad range of Native languages from our tribal communities, provide our state with unique educational opportunities.

Reform infrastructure development

The Foundation prioritizes programs and organizations that demystify education reform for community members, make it easier for community to get involved, and facilitate broader interest in education around the state.

Afterschool and in-school supplemental programs

Projects that are aligned with the Foundation's broader education transformation goals. Priority will be given to programs that connect to broader, community based initiatives or that reflect deeper levels of coordination among groups serving the same populations.

Efforts that are coordinated or collaborative in nature.

Priority Area: Economic Development & Family Asset Building

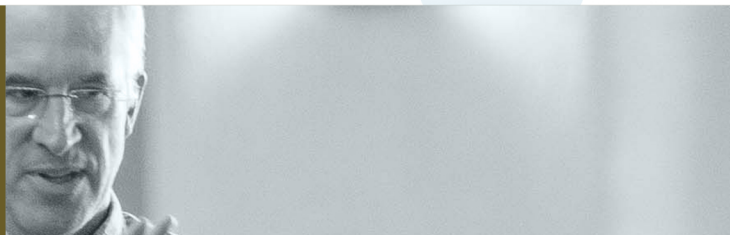
“Effective economic development is necessary to provide economic security and a dignified quality of life for our residents, especially due to the state’s high levels of poverty and unemployment.”

Key Leverage Points

Economic Development

Scalable elements supported by high-touch interventions

Approaches that push the envelope in support to emerging enterprises, especially those that show potential for growth.



Innovation in enterprise structure

Appropriately blend various financial resources (private, public, philanthropic, etc.) to fund enterprise creation and growth; develop new structures of ownership and equity.



Accessibility of capital

Pair supportive elements to the entrepreneur with sources of capital that are committed to “social” and financial returns are of interest to the Foundation.



Key Leverage Points

Family Asset Building

Financial capabilities and economic engagement

Build competencies, confidence and economic engagement for vulnerable New Mexico families.



Mortgages and credit

Make homeownership more accessible and successful. More affordable access to capital for working families.



Savings

Encourage and incentivize savings are considered for funding.